

## Corporate Professional Fitted Office

### Property:

23rd Floor, 100 Queen's Road Central

### Area:

6,739 sq.ft. Gross (approx.)

### Monthly Rental:

HK\$74 p.s.f.

### Monthly Air-Conditioning & Management Fee:

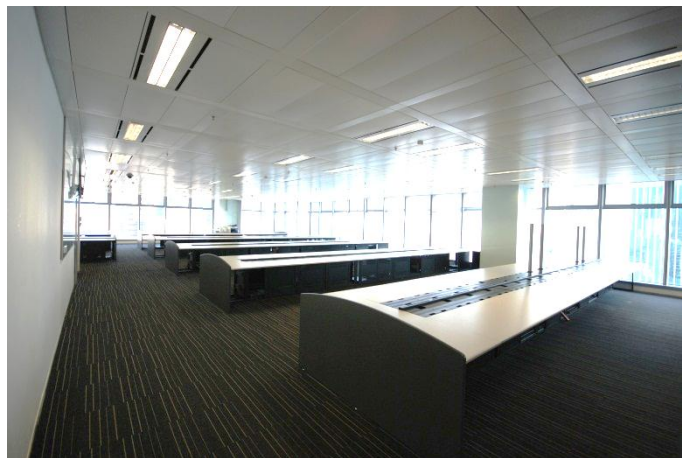
HK\$7 p.s.f.

### Availability:

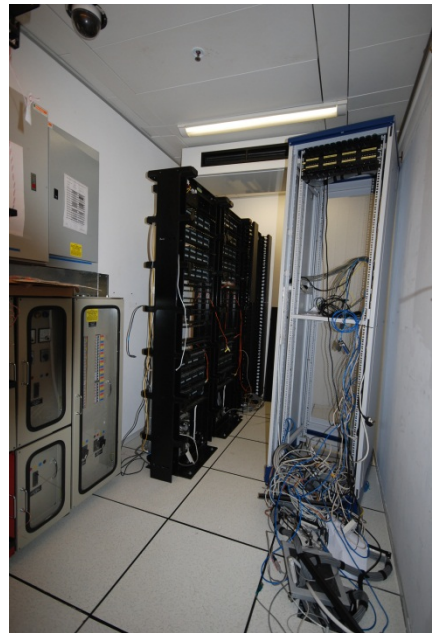
Immediate

### Features:

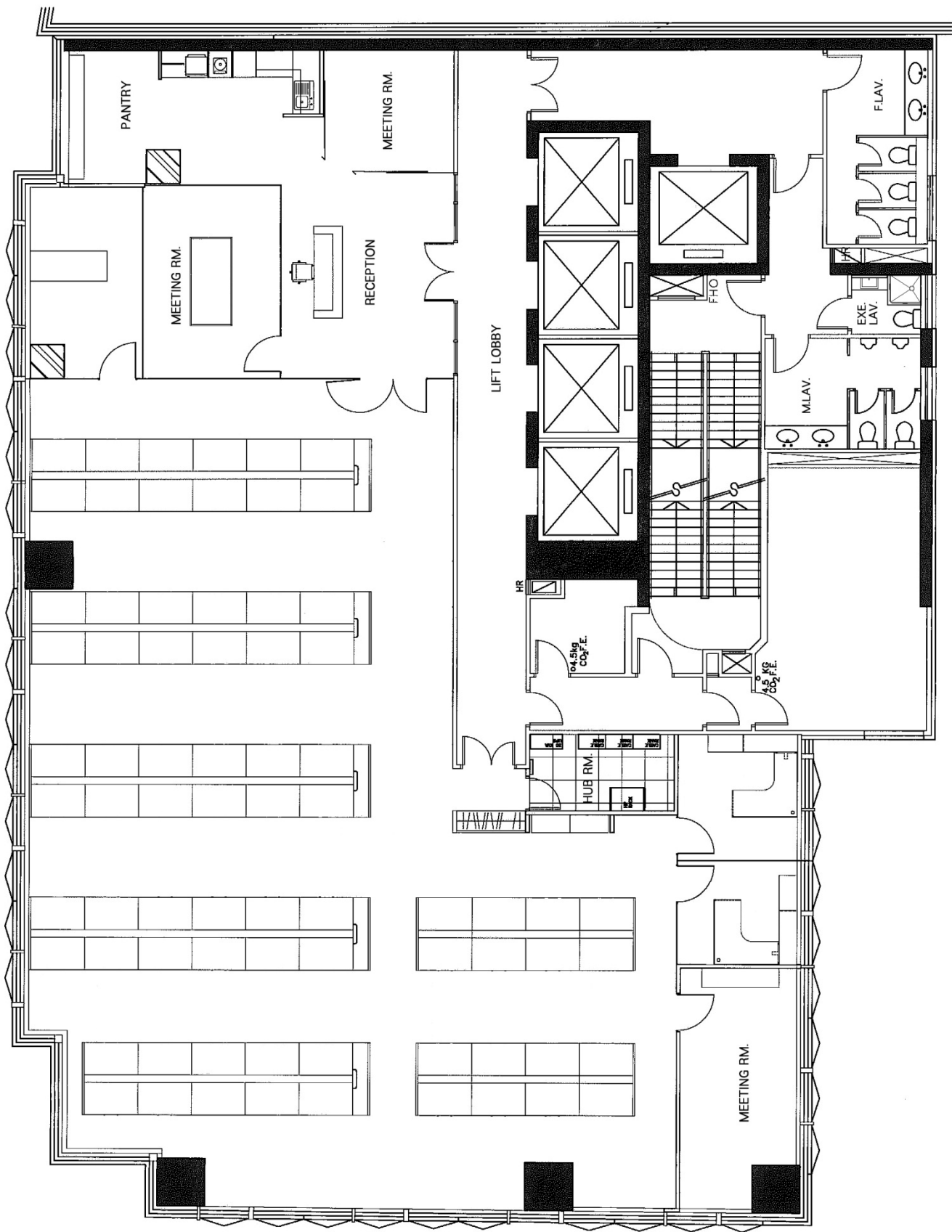
- Conveniently located with Covered Walkway connecting to MTR, Airport Express and Hong Kong Station
- Fully fitted office with Reception Area, Conference Room, Meeting Rooms, Director Office, Manager Rooms, Trading Desks, Well-equipped Pantry, Server Room
- In-house car-parking spaces available
- Raised Floor System
- Executive Toilet with Shower







# 23/F Layout Plan



Not to scale  
For identification purpose only